

2020 Interstate Nineteen



INTERSTATE[®]
NINETEEN[™]

AIRSTREAM

All-New Luxury & Safety Features

Airstream Interior Décor

Pick from five beautiful décor options including the exclusive Tommy Bahama® Special Edition.



Mercedes-Benz Interior Design

Cockpit, advanced in-dash technology, power seats and more.

50+ Best-in-Class Features. All Standard.

Welcome to the all-new Airstream Interstate Nineteen with dozens of new features and enhancements including the redesigned Mercedes-Benz Sprinter Next Generation chassis.

When it comes to design, safety, quality, technology and performance, Airstream and Mercedes-Benz lead the way.



Mercedes-Benz Power Sliding Door

Power sliding door provides incredible ease of entry.

Mercedes-Benz Exterior Design

New, stunning, European styling.

Mercedes-Benz Safety Systems

Active safety systems automatically provide additional safety.



Airstream Body Kit Design

Body kit includes over 40 exclusive tooled components including front Airstream badging and more.

2020 Interstate Nineteen



Formal Black Décor

2020 Interstate Nineteen Décors

EXTERIOR COLORS

Jet Black

Iridium Silver Metallic

Arctic White



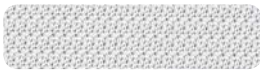
Formal Black Décor

INTERIOR DÉCORS

Modern Greige



Seating



Walls



Flooring



Cabinetry

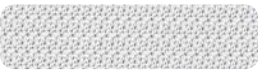


Countertop

Refined Brown



Seating



Walls



Flooring



Cabinetry



Countertop

Formal Black



Seating



Walls



Flooring



Cabinetry



Countertop

Lux White



Seating



Walls



Flooring



Cabinetry



Countertop










2020 Interstate Nineteen Tommy Bahama® Special Edition



Tommy Bahama® Special Edition Décor




2020 Interstate Nineteen Tommy Bahama® Special Edition Décor



| | | |
|---|--|--|
|  Seating |  Bedspread |  Cabinetry |
|  Accent |  Accent |  Accent |
|  Flooring |  Countertops |  Awning |



EXTERIOR COLORS

| |
|---|
|  |
| Jet Black |
|  |
| Iridium Silver Metallic |
|  |
| Arctic White |



2020 Interstate Nineteen Floor Plan



Interstate Nineteen



Sleeping Quarters

Interstate Nineteen
Seats: 4
Sleeps: 2

Best-in-Class

Style, Systems, Storage
& Sleeping Quarters

The Interstate Nineteen's floor plan has space for everything you need, whether you're on the road or enjoying your destination.

A bathroom, kitchen, sleeping space, and more
– *all in a smaller, easy to maneuver package.*



2020 Interstate Nineteen & Interstate Nineteen Tommy Bahama® Special Edition Specifications

| | |
|-----------------------|---|
| Chassis | Mercedes-Benz® Sprinter 2500 |
| Engine | Mercedes-Benz® 3.0L V6 Turbo Diesel |
| Emissions | BlueTEC SCR Technology, 50 State – EPA/CARB Standards |
| Horsepower | 188 HP / 325 lbs torque |
| Transmission | 7 Speed Automatic |
| Axle Ratio | 3.92 |
| Wheelbase | 144" |
| MPG* | 18+ Estimated Highway |
| Chassis Safety System | Mercedes-Benz® Adaptive ESP® (Electronic Stability Program) |
| GVWR/GCWR | 9,050 lbs/13,930 lbs |
| UBW | 7,426 lbs |
| OCCC | 1,663 lbs |
| Tow Package | Mercedes-Benz® Hitch, 7 Pin Trailer Plug, Brake Control Pre-wired |
| Tow Capacity** | Up to 5,000 lbs |
| Trailer Safety System | Mercedes-Benz® Trailer Stability Assist System |
| Overall Length | 19 ft. 5 in. |
| Overall Height | 9 ft. 7 in. (including A/C & Antenna) |
| Overall Width | 6 ft. 7 in. |
| Interior Height/Width | 6 ft. 2 in. / 5 ft. 8 in. |
| Tank Capacities | 21 gals (Fresh), 16 gals (Grey), 9 gals (Black) |
| LPG | 9.34 gals (38.4 lbs) 77% fill |
| Diesel Fuel | 24.5 gals |
| Air Conditioner | 13,500 BTU (with heat strips) |
| Furnace | 14,300 BTU Truma Combi Eco Plus Furnace |
| Water Heater | Truma Combi Eco Plus Hot Water |

| | |
|------------------------|---|
| Heated Tanks | Fresh and Grey Tanks (12 volt) |
| Refrigerator & Freezer | 2.95 cubic foot Refrigerator / .25 cubic foot Freezer (12 volt w/LED light) |
| Microwave | 0.7 cubic foot microwave |
| Cooktop | 2 Burner with Integrated Cover |
| Safety Components | LP Gas Detector, Smoke and CO ₂ Alarm, Fire Extinguisher |
| Plumbing System | Macerator Pump System |
| TV Antenna | Directional In-motion VHF/UHF |
| TV Cable | Cable TV Outlets/Hook-ups |
| TV Satellite | Pre-wired for Satellite Dish |
| Connected 5G Antenna | Pre-wired for Connected Service |
| Electrical System | Touch Screen/Touch Pad Electronic Controls with Energy Management |
| Converter/Inverter | 50 amp Multi-stage Charger, 1,000 Watt Pure Sine Inverter |
| Generator | 2.5 kW (LPG) with Remote Start and Ultra Quiet Resonator |
| Batteries (Coach) | 2-12 Volt Deep Cycle Maintenance Free Group 24 AGMs |
| Shore Power | 30 amp/110 Volt Service |
| Solar Power | 250 Watt Solar Panel |
| Support | 24/7 365 Roadside Assistance |
| Warranty*** | 3 Years/36,000 Miles Airstream |
| | 3 Years/36,000 Miles Mercedes-Benz® |
| | 5 Years/100,000 Miles Mercedes-Benz® Engine |

* Actual mileage may vary due to load, driving style, and overall conditions.

** Typical tow capacity will range from 4,200-5,000 lbs dependant upon build spec and intended vehicle loading with people, cargo, and fluids.

*** New Vehicle Limited Warranty. Individual components may vary. See Owners Manual for specific warranty coverage and information.

SAFETY

| | |
|--|-----|
| Multiple Safety Air Bags | STD |
| Active Brake Assist | STD |
| Active Lane Keeping Assist | STD |
| Active Blind Spot Assist | STD |
| Active Cruise Control Assist | STD |
| Active Driver Attention Assist | STD |
| Active Rear Cross Traffic Assist | STD |
| E-Call Assist | STD |
| Traffic Sign Assist | STD |
| Front & Rear Parktronic Parking Assist | STD |
| High Beam Assist | STD |
| Rain Sensing Windshield Wipers | STD |
| Rear Camera Assist | STD |

COCKPIT

| | |
|--|-----|
| Power Adjustable Heated Driver/Passenger Seats | STD |
| Tilt & Telescopic Leather Steering Wheel | STD |
| Advanced Multifunctional Steering Wheel | STD |
| Push Button Keyless Start | STD |
| Steering Wheel Paddle Shifters | STD |

| | |
|--|-----|
| Entry Door Lighting | STD |
| In-Dash Wireless Cell Phone Charging | STD |
| Overhead Map Lights | STD |
| In-Dash Maintenance Monitoring System | STD |
| MBUX Infotainment System (Mercedes-Benz User Experience) touch screen, pinch, zoom, voice recognition, Apple Carplay, Android capability | STD |
| Rear View Camera Monitor | STD |
| Custom Carpet Floor Mats | STD |
| Privacy Shades | STD |
| Rear Cabin Carpet Kit | OPT |

EXTERIOR

| | |
|--------------------------------------|-----|
| Full Body Kit | STD |
| Hidden Hitch Cover Rear Bumper | STD |
| Fog Lamps | STD |
| Mercedes-Benz Aluminum Wheels | STD |
| High Performance LED Headlights | STD |
| Power Heated Mirrors | STD |
| Power Armless Awning w/Auto Retract | STD |
| Power Entry Step (sliding side door) | STD |

| | |
|--|-----|
| LED Lighting - patio, service box locations, adjustable awning, under carriage | STD |
| Locking Service Boxes | STD |
| Exterior Shower with Hot & Cold Water | STD |
| LP Accessory Hook-up (Grill) | STD |
| Power Rear Screen | STD |
| Side Screen Door | STD |
| Power Sliding Door | STD |

MAIN CABIN

| | |
|--|-----|
| Signature Aluminum Ceiling & Trim | STD |
| Matte Finish Laminate Cabinetry | STD |
| Flush-Mount & Solid Shut Cabinets | STD |
| Ultraleather™ Seating | STD |
| Vinyl w/Urethane Covering on Walls & Windows | STD |
| Power Window Shades | STD |
| Marine Woven Synthetic Flooring | STD |
| Adjustable LED Lighting | STD |
| Adjustable Swivel Table (1) | STD |
| LED Widescreen HDTV | STD |
| Power Rear Sofa Converts to Lay Flat Bed | STD |

| | |
|--------------------------------|-----|
| Power Ottomans | STD |
| USB Charging Ports | STD |
| Fantastic Fan with Rain Sensor | STD |

BATHROOM (WET BATH)

| | |
|--------------------------------|-----|
| Toilet | STD |
| Shower | STD |
| Sink with Articulated Mirror | STD |
| Riveted Aluminum Porthole Door | STD |
| Retractable Clothes Line | STD |
| Towel Rack | STD |

GALLEY

| | |
|------------------------------------|-----|
| Corian® Countertop with Backsplash | STD |
| Corian® Galley Slide-Out Shelf | STD |
| Sink with Integrated Cover | STD |
| Cooktop with Cover | STD |
| Under Counter Lighting | STD |

*Information and Specifications are based on the 2020 model year and are subject to change without notice. For additional information, consult your Authorized Airstream Dealer.

Airstream® + Mercedes-Benz®

Roll with the Best.®



adventure, inspired by
AIRSTREAM

419 West Pike Street
P.O. Box 629
Jackson Center, OH
45334 USA

937-596-6111
www.airstream.com



Our Exclusive Partner

Airstream is an exclusive partner of the Mercedes-Benz® Club of America and every purchase of a new Airstream Interstate Touring Coach comes with a free one-year MBCA membership.

Product information, specifications, and photography in this brochure were as accurate as possible at time of printing. Photographs may contain some features that are optional on your vehicle.

Since we continually strive to improve our products, actual products may differ. Prices and specifications are subject to change without notice. All capacities are approximate and dimensions are nominal. Some features or options may be different or unavailable in other countries.

Warning – The recreational vehicle weight must remain within the manufacturer's specified chassis weight limit. Do not overload the recreational vehicle through the addition of water, options, cargo or otherwise.

TOMMY BAHAMA is a registered trademark of Tommy Bahama Group, Inc. Used with permission.

AIRSTREAM and all related model names, slogans, logos, and trademarks used herein are owned or are used under license by Airstream, Inc. MERCEDES BENZ® and related logos and trademarks are owned by Daimler AG and are used with permission. All other third party trademarks are owned by their respective owners.

All content and images

© Airstream 2019

MKT-000021