

2005 **A-SERIES MOTORCOACH** **AIRSTREAM**



IT'S THE JOURNEY. NOT THE DESTINATION.

It's not just about where you're going - it's how you live while you're getting there. The **A-Series** invites you to reconsider your perspective on the journey ahead. Think of the **A-Series** as an opportunity to leave the concept of a motorcoach behind and take up a sumptuous mobile residence. Luxury, performance, quality and value: the things you've come to expect from Airstream are all here, along with countless unexpected details. Spacious and exquisitely finished, the **A-Series** is the ultimate expression of Airstream's design resources and engineering capability . . . for your journey. Airstream is pleased to present a vision of your future life . . . **the A-Series.**



NEW FOR 2005 **SPECTACULAR A-SERIES** **FEATURES**

- *Navigation system*
- *Flush-Mounted Awning Style Windows*
- *Yacht-inspired interior*
- *Dishwasher*
- *23 cu. ft. SS residential refrigerator*
- *21" LCD bedroom TV*
- *50 amp energy management system*
- *Auto generator start with 12KW diesel generator*
- *Hydro Hot*

Elegant lines, sumptuous fabrics, premium appliances and gorgeous modern cabinetry are part of the integrated interior of the **A-Series**. Ceramic tile flooring complements the finest and most durable carpeting. Slide-out living and bedroom areas increase your interior space. Luxurious touches such as Corian surfaces, brushed nickel hardware, a vessel sink, and a separate shower with skylight are also included. Let the interior of **A-Series** take you beyond your expectations of a motorcoach.

AIRSTREAM™
 SEE MORE DO MORE LIVE MORE



419 West Pike Street, P.O. Box 629, Jackson Center, Ohio 45334
 Telephone: 937-596-6111 www.airstream.com

SPECIFICATION

A-SERIES MOTORCOACH

2005

A-SERIES

A37

A39

A-SERIES

A37

A39

A-SERIES SPECIAL FEATURES

Hydro hot	STD	STD
Dishwasher	OPT	OPT
Navigation system	OPT	OPT
Auto generator start	STD	STD
12KW diesel generator	STD	STD
Flush-mounted awning style windows	STD	STD
23 cu. ft. stainless steel residential refrigerator	STD	STD
Yacht-inspired interior	STD	STD
21" LCD TV – bedroom	STD	STD
50 amp energy management system	STD	STD

GENERAL

Freightliner XC 400 HP Cummins ISL	252"	252"
Exterior length	37'4"	39'4"
Exterior width	101"	101"
Exterior height with A/C	11'10"	11'10"
Interior head room	78 1/2"	78 1/2"
Interior width	95"	95"
UBW (Unit Base Weight) w/full fuel tank / w/o options or fluids (lbs)	TBD	TBD
+ NCC (Net Carrying Capacity) w/o options / personal cargo / fluids (lbs)	TBD	TBD
= GVWR (Gross Vehicle Weight Rating) (lbs)	32,000	32,000
GCWR	42,000	42,000
Rear axle ratio 4.63:1	STD	STD
Tire size: 275/70R 22.5 xza1	STD	STD
Rim size: 22.5 x 8.25	STD	STD
P.S.I.	95	95
GAWR front	12,000	12,000
GAWR rear	20,000	20,000
Seating capacity	5	5
Sleeping capacity	4	4
Fuel tank (gal)	100	150
Trailer hitch 1000 hw / 10000 gvw	STD	STD
50 amp service (includes 50 amp power cord 36' male end only)	STD	STD
Fresh water tank w/drain (gal)	105	105
Wash water holding tank (gal)	79	79
Black water holding tank (gal)	55	55
Heated holding tanks	STD	STD
No fuss flush system (black tank only)	STD	STD

SAFETY AND COMFORT

Front / rear shocks with air suspension	STD	STD
Electric operated entrance step (double)	STD	STD
Pantograph wipers w/wet arm & controlled cycle w/extra wide sweep (ews)	STD	STD
Back-up warning (buzzer)	STD	STD
Transmission temp gauge	STD	STD
Exhaust brake	STD	STD
Automotive A/C with side window defroster and bi-level function with electronic rotary control instrument panel (analogue)	STD	STD
Tilt / telescopic steering column with 18" wheel	STD	STD
Halogen headlights	STD	STD
Driving lamp, halogen	STD	STD
Docking lights, halogen (6) 2-RS, 2-CS, 2-rear	STD	STD
Air horns – roof mounted	STD	STD
Heated exterior mirrors with remote control – painted	STD	STD
Tinted glass (30% light transmitted)	STD	STD
Electric keyed dead bolt main door	STD	STD
Rearview TV monitor audio / video w/two position camera & fiberglass cover	STD	STD
Keyless entry: features a 4 channel remote	STD	STD
Fire extinguisher	STD	STD
Rear rock guard – with stainless steel applique	OPT	OPT
Radial tires	STD	STD
Smoke, carbon monoxide & LPG detectors	STD	STD

EXTERIOR

Laminated roof, sidewalls and floor	STD	STD
Rear ladder (two piece – removable bottom)	OPT	OPT
Basement storage with insulated aluminum single point latch doors	STD	STD

INTERIOR

Brushed nickel hardware	STD	STD
Real wood drawer boxes	STD	STD
Corian tables and countertops	STD	STD
Ceramic tile floor – galley / bath area	STD	STD
Skylight with blackout shade - galley area	OPT	OPT

APPLIANCES

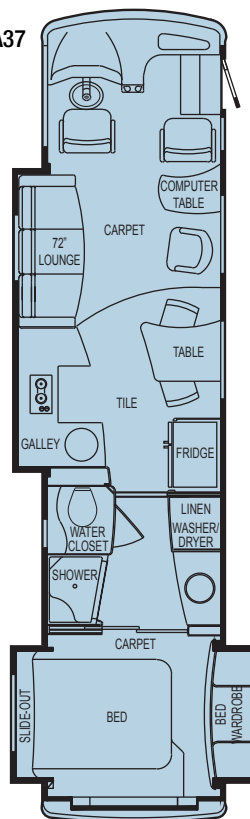
2 Burner range top with storage drawers	STD	STD
Convection microwave – stainless steel	STD	STD
Air conditioners with heat strip - low profile (2) 13,500 BTU with ceiling duct, quick cool return air grille, & comfort control center	STD	STD
Washer / dryer combination	OPT	OPT

ENTERTAINMENT

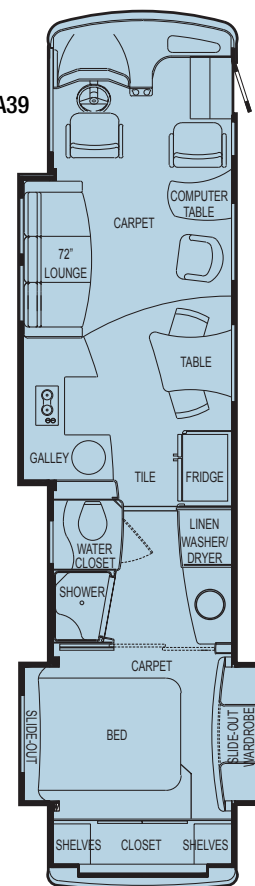
26" stereo LCD TV with interlock (front overhead rooflocker)	STD	STD
Stereo TV – bedroom	STD	STD
Video control center (VCC) & cable hook-up	STD	STD
Telephone hook-up (2) bedroom & CS cab	STD	STD

FLOORPLANS

A37



A39



Specifications are subject to change without notice. Check with an Airstream dealer for new upgrades and options available for this model. Canadian specifications will differ from U.S.

AIRSTREAM™
SEE MORE DO MORE LIVE MORE



419 West Pike Street, P.O. Box 629, Jackson Center, Ohio 45334
Telephone: 937-596-6111 www.airstream.com

ASRMC_SS 03.05